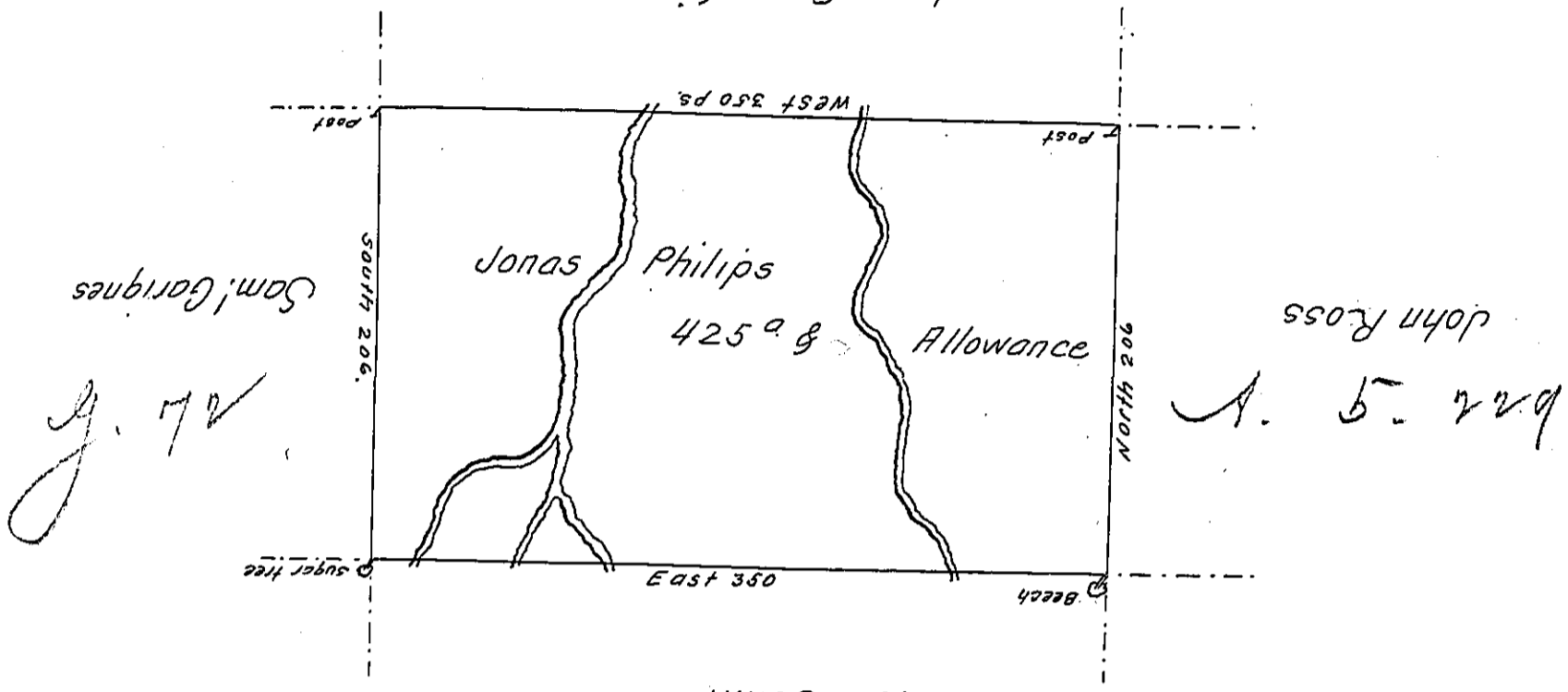


C. 68. 68

Jess Greenfield



Wm Gunkle

D. 39. 254

A Draught of a tract of Land Called - Situate on the Main Branch of Snake Creek joining Land Surv^d for W^m Gunkle & others in Stoke Township North^d County Containing four Hundre^d & Twenty five Acres & allowance of Six p. Cent for Roads &c. Surv^d for Jonas Philip's the 15th Day of September 1784. in pursuance of a Warrant Dated the 24th Day of August 1784.

by

To John Lukens Esq^r }
 Surv^r Gen^l }

W^m Gray D. S.

IN TESTIMONY that the above is a copy of the original remaining on file in the Department of Internal Affairs of Pennsylvania, made conformably to an Act of Assembly approved the 16th day of February, 1833, I have hereunto set my Hand and caused the Seal of said Department to be affixed at Harrisburg, this ninth day of May 1906.

James B. Brown
 Secretary of Internal Affairs.